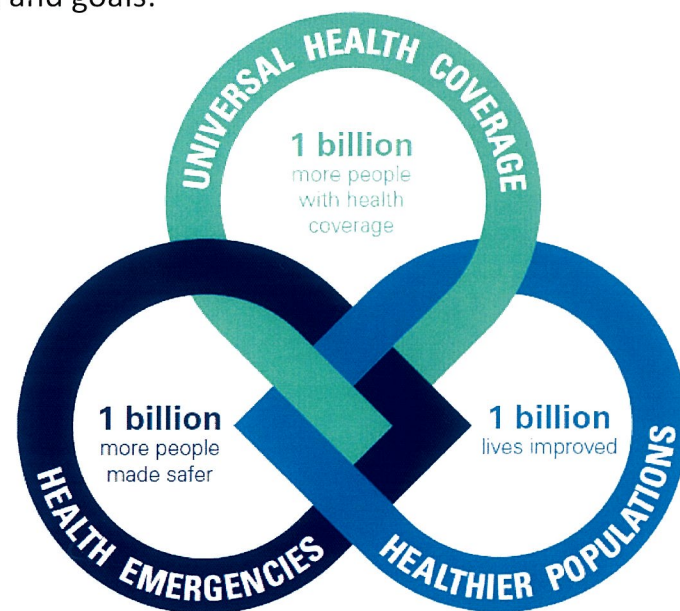


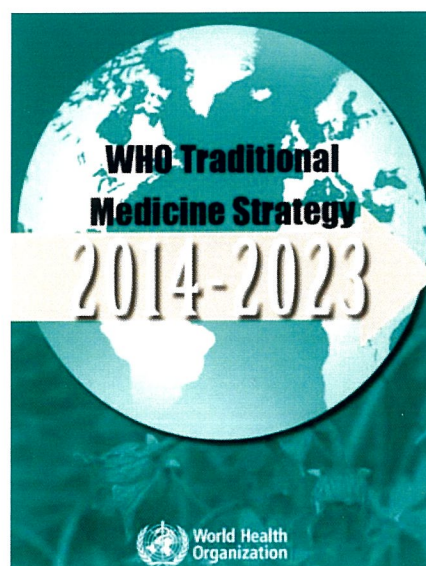
HEALTH IN THE SDG ERA



WHO 13th General Programme of Work, 2019 – 2024 strategic priorities and goals:



WHO Traditional, Complementary and Integrative Medicine (TCI) Programme current strategy:



“Integrate traditional and complementary medicine (T&CM) into health services particularly primary health care services”

Universal
Health
Coverage



**WHO Traditional
Medicine Strategy
2014 - 2023**

**World Health Assembly
Resolution 67.18**

“Traditional Medicine is the sum total of the knowledge, skills, and practices based on the theories, beliefs, and experiences indigenous to different cultures, whether explicable or not, used in the maintenance of health as well as in the prevention, diagnosis, improvement or treatment of physical and mental illness.”

“Complementary medicine” or “alternative medicine” refer to a broad set of health care practices that are not part of that country’s own tradition or conventional medicine and are not fully integrated into the dominant health-care system.

www.who.int/traditional-complementary-integrative-medicine

trm@who.int

Traditional, Complementary and Integrative Medicine

**Achieve UHC
by
Integrating
Traditional & Complementary
Medicine**



**World Health
Organization**

Activities of the Traditional, Complementary and Integrative Medicine (TCI) Unit at WHO Headquarters

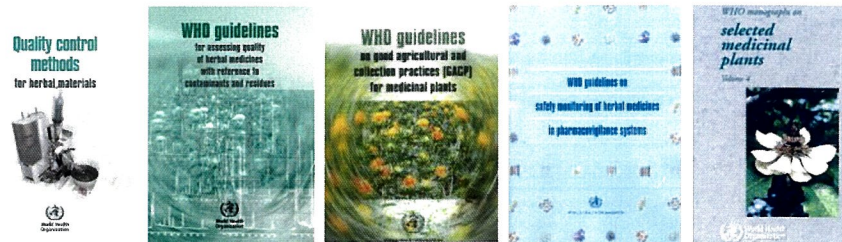
1) Produce global goods

Strategies, norms and standard

Standards, norms and technical documents

1. Development of **technical documents**

- Global guidelines on quality and safety of herbal medicines



- “Key technical issues for the safe use of herbal medicines with reference to interaction with other medicines”

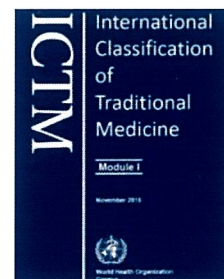


- Methodology for clinical study in traditional medicine (TM)

2. International **Terminology and Classification** of Traditional & Complementary Medicine (T&CM)

- ICD-11** for Mortality and Morbidity Statistics Supplementary Chapter Traditional Medicine Conditions – Module I

<https://icd.who.int/>

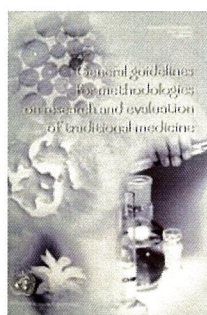


- Developing Web-based International terminologies in Ayurveda, Siddha, Traditional Chinese medicine, Unani
- Proposed terminology in Thai traditional medicine

3. Development of a series of **Benchmarks for Practice** in T&CM

- Currently developing Benchmarks for Practice in Acupuncture, Ayurveda, Panchkarma, Tuina, Unani

Research and knowledge



- Clinical evidence database
- T&CM Knowledge Platform



2) Lead global health agenda

Global partnerships

Leadership

1. **WHO Traditional Medicine Strategy 2014 - 2023**

- goals are to support Member States in:
 - harnessing the potential contribution of T&CM to health, wellness, people-centred health care and UHC;
 - promoting safe and effective use of T&CM through the regulation, research and integration of T&CM products, practices and practitioners into the health system, as appropriate.



2. **Integration** of T&CM in national health systems

- Support Member States in their efforts
- Review and assess the existing models of integration in Member States to record and recommend best practices

3. **Networking**

- International Regulatory Cooperation for Herbal Medicines (IRCH)
- WHO Collaborating Centres, WHO Expert Advisory Panel, NGOs

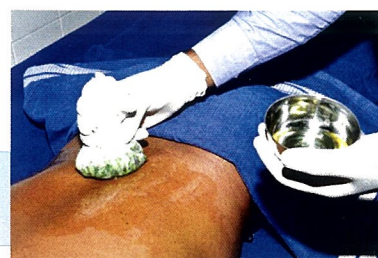
Monitoring and assessing

- Monitoring **implementation** of WHO Traditional Medicine Strategy 2014 - 2023
- Conduct regular **global surveys** and report the global trends in T&CM



- TCI **indicators** in the Global Reference List of Core Health Indicators:

- T&CM outpatient service utilization
- Pain management with T&CM



3) Provide highly specialized technical assistance

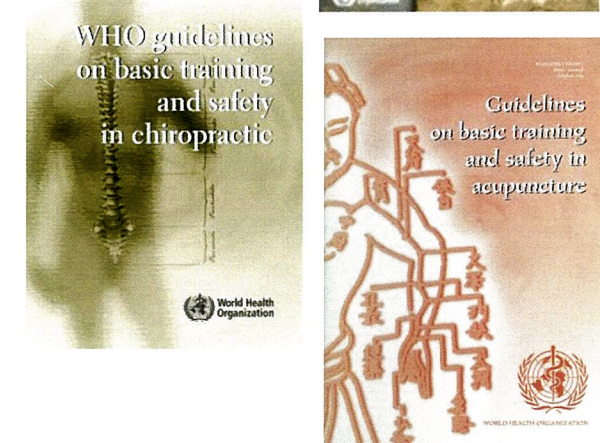
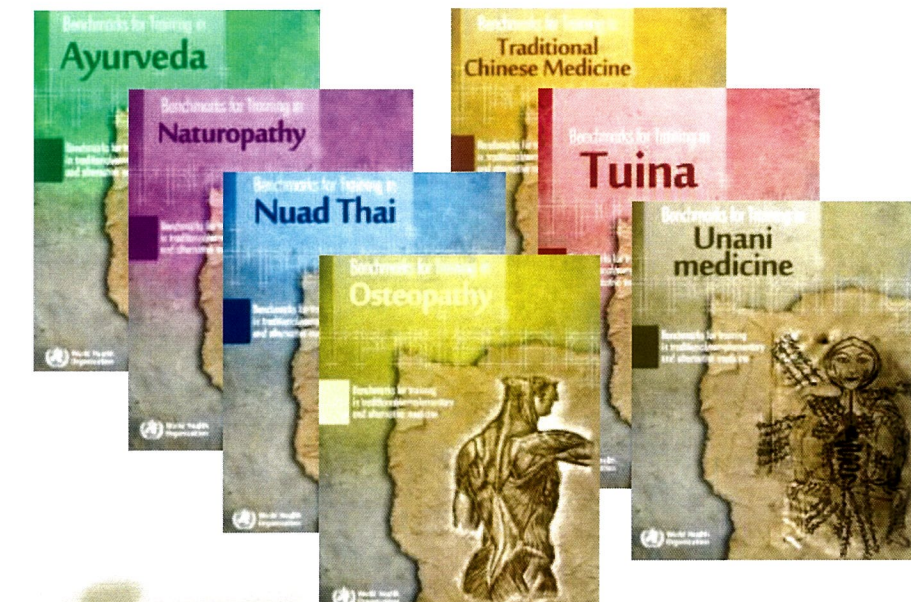
focusing on delivery of the ‘triple billion targets’

Ethical and evidence-based policy

Country **support** in the implementation of the WHO TM Strategy 2014 - 2023

Building institutional capacity

- Interregional training **workshops** for capacity building of government officials
 - Series of workshops in Macao SAR, China
- Development of capacity building **tools**
 - Benchmarks for Training in T&CM



- Currently developing **Benchmarks for Training** in Anthroposophic Medicine, Cupping, Tibetan Medicine, Yoga

